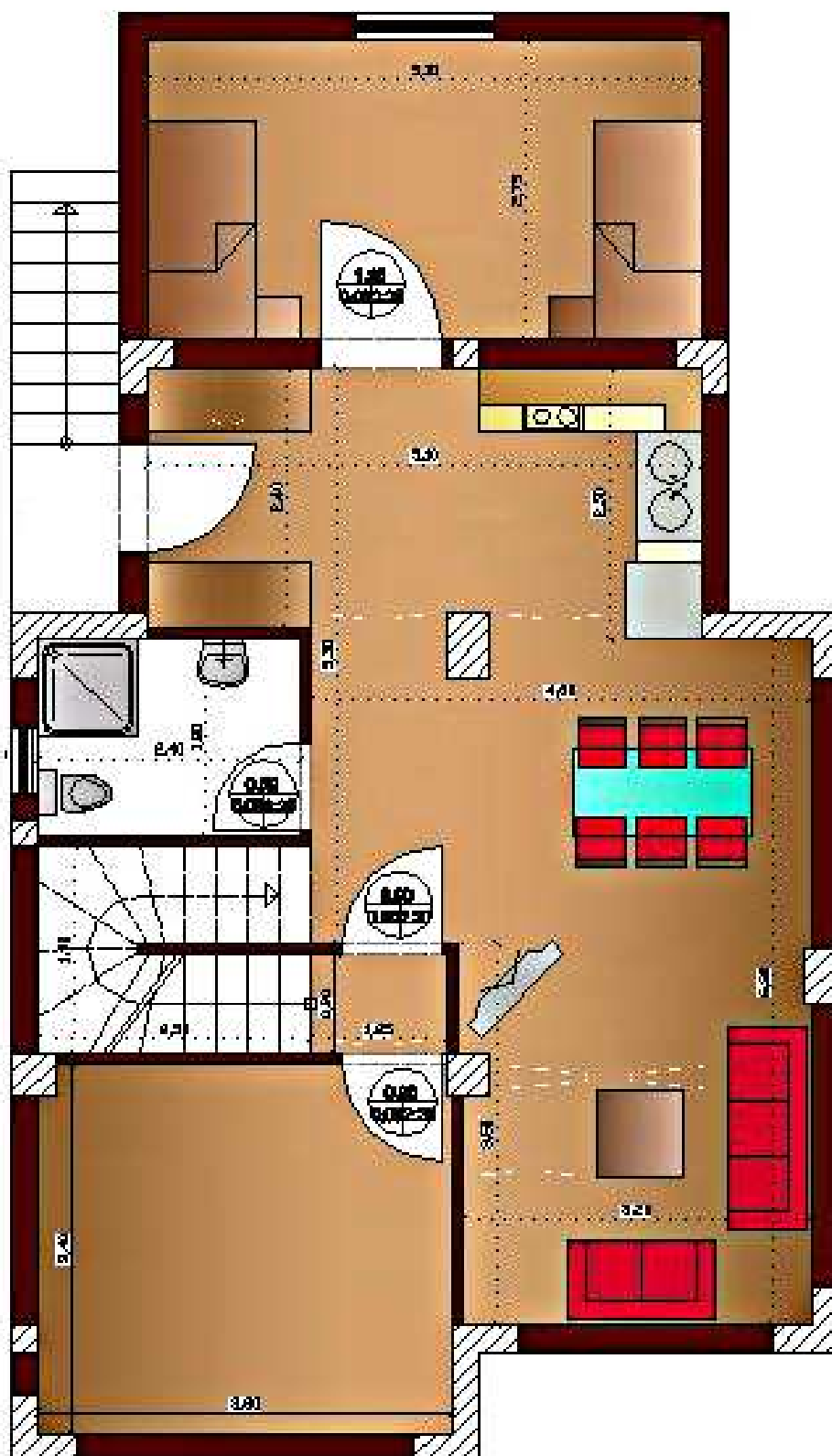


## PLAN DU SOUS-SOL

### THALIA Basement



### THALIA Ground floor

The floor plan of the ground floor of the Thalia building is detailed as follows:

- Central Hall (A.20):** A large brown-colored area with dimensions 4.20 (width) and 3.40 (length). It contains a staircase (A.14) and a service area (A.15) with a sink and stove.
- Entrance A.21 (Top):** A white-colored area with dimensions 4.20 (width) and 4.00 (length). It contains three circular tables, each labeled 0.70.
- Entrance A.16 (Bottom Right):** A white-colored area with dimensions 4.00 (width) and 3.00 (length). It contains a circular table labeled 1.00.
- Entrance A.17 (Bottom Left):** A white-colored area with dimensions 4.00 (width) and 3.00 (length). It contains a circular table labeled 1.00.
- Service Area (A.15):** A yellow-colored area with dimensions 2.00 (width) and 2.00 (length). It contains a sink and a stove.
- Staircase (A.14):** A white-colored area with dimensions 1.40 (width) and 2.00 (length).

**THALIA**  
Ground floor

## PLAN DU PREMIER ÉTAGE

